

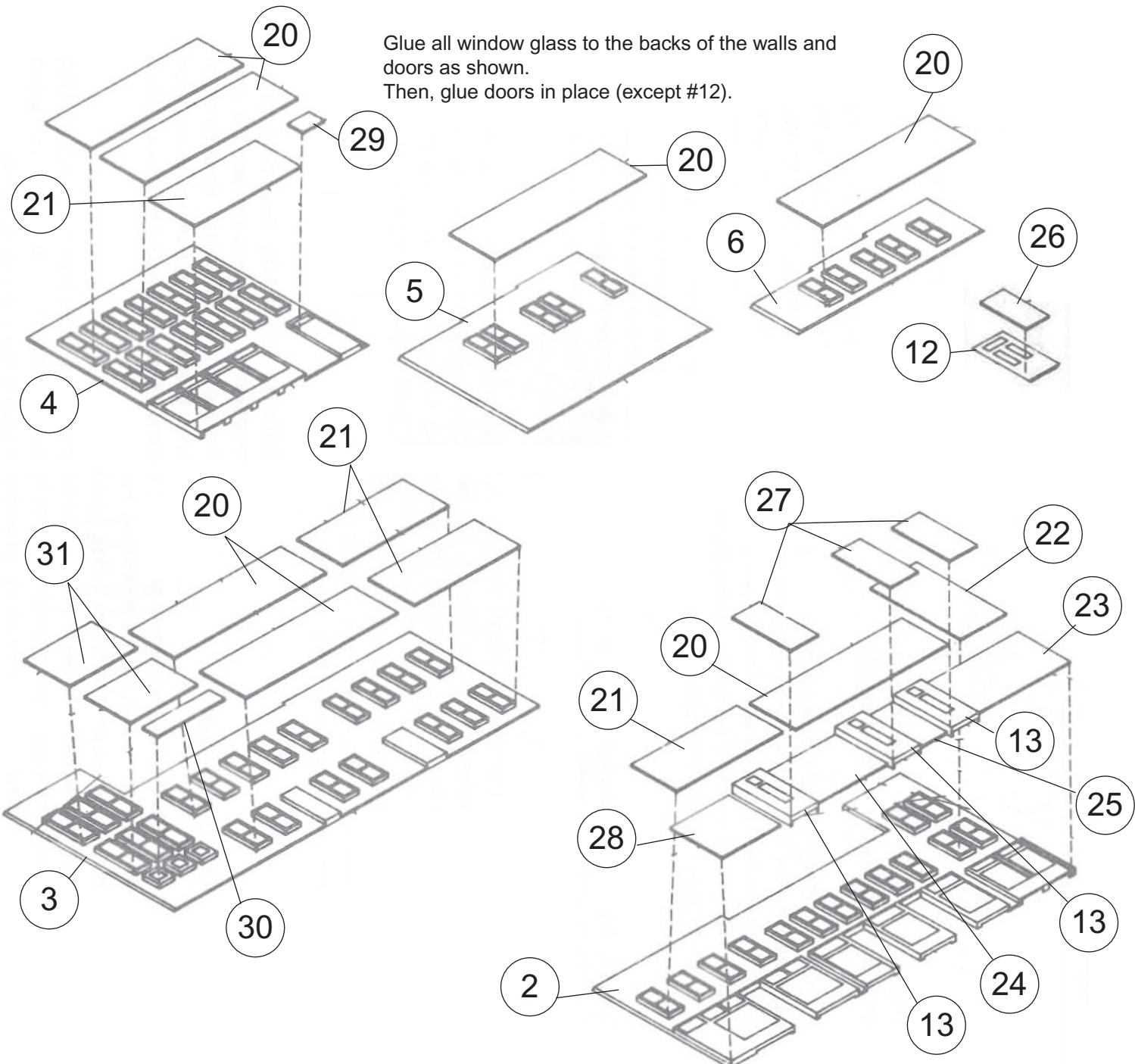


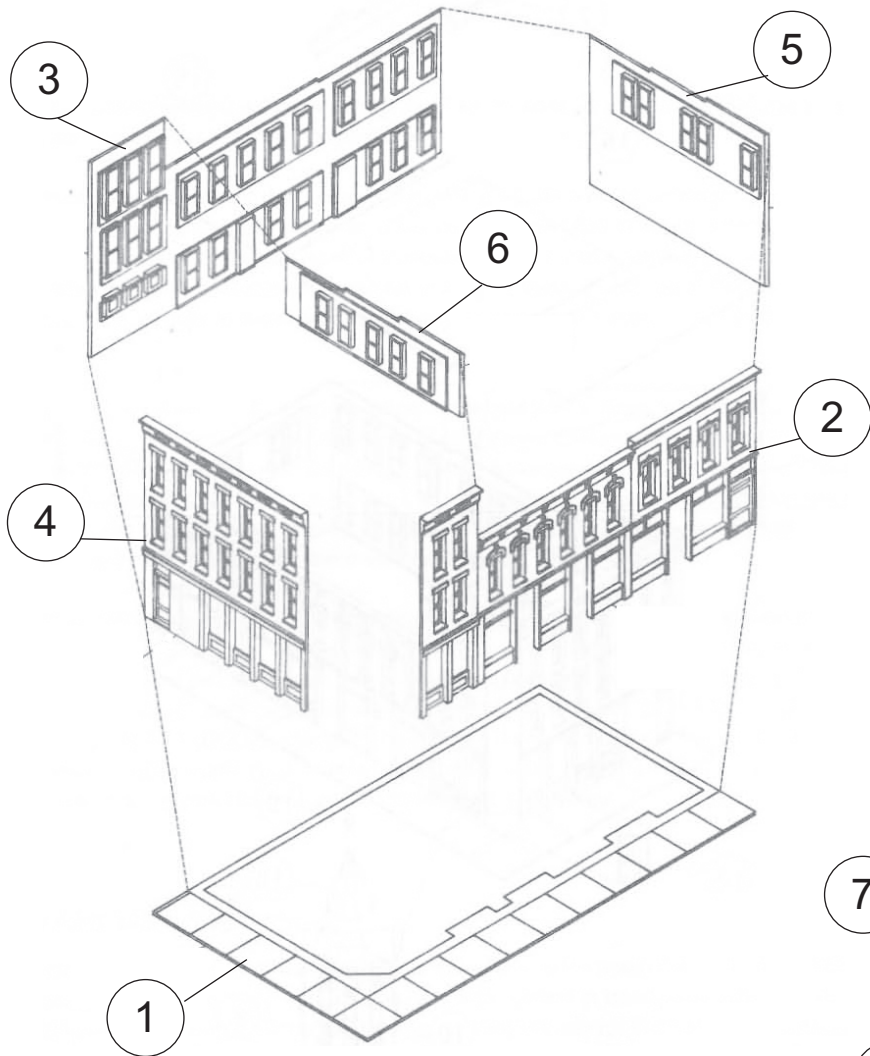
HO Structure Kit MERCHANTS ROW II 933-3029

Thanks for purchasing this Cornerstone Series® kit. Please read all instructions and study the drawings before starting. All parts are styrene plastic, so use compatible glue. If you wish to decorate your model, use paints for plastic models. With appropriate details and signs, your finished model fits almost any era.

This kit is ideal for any business district from the 1880's to the present day. While buildings like this were common in the downtown area, the development of trolley lines (and later the automobile) made it possible for the middle class to leave the city for the Suburbs. Small blocks of commercial structures (like this kit) became common on busy streets, as businesses developed to serve local customers. Appropriate signs, figures and vehicles will help set the time and place of your layout and make the structure blend in.

See your local hobby dealer, Walthers Latest HO Scale Reference book or visit our Web site at www.waltherscornerstone.com for additional accessories to complete your new scene.





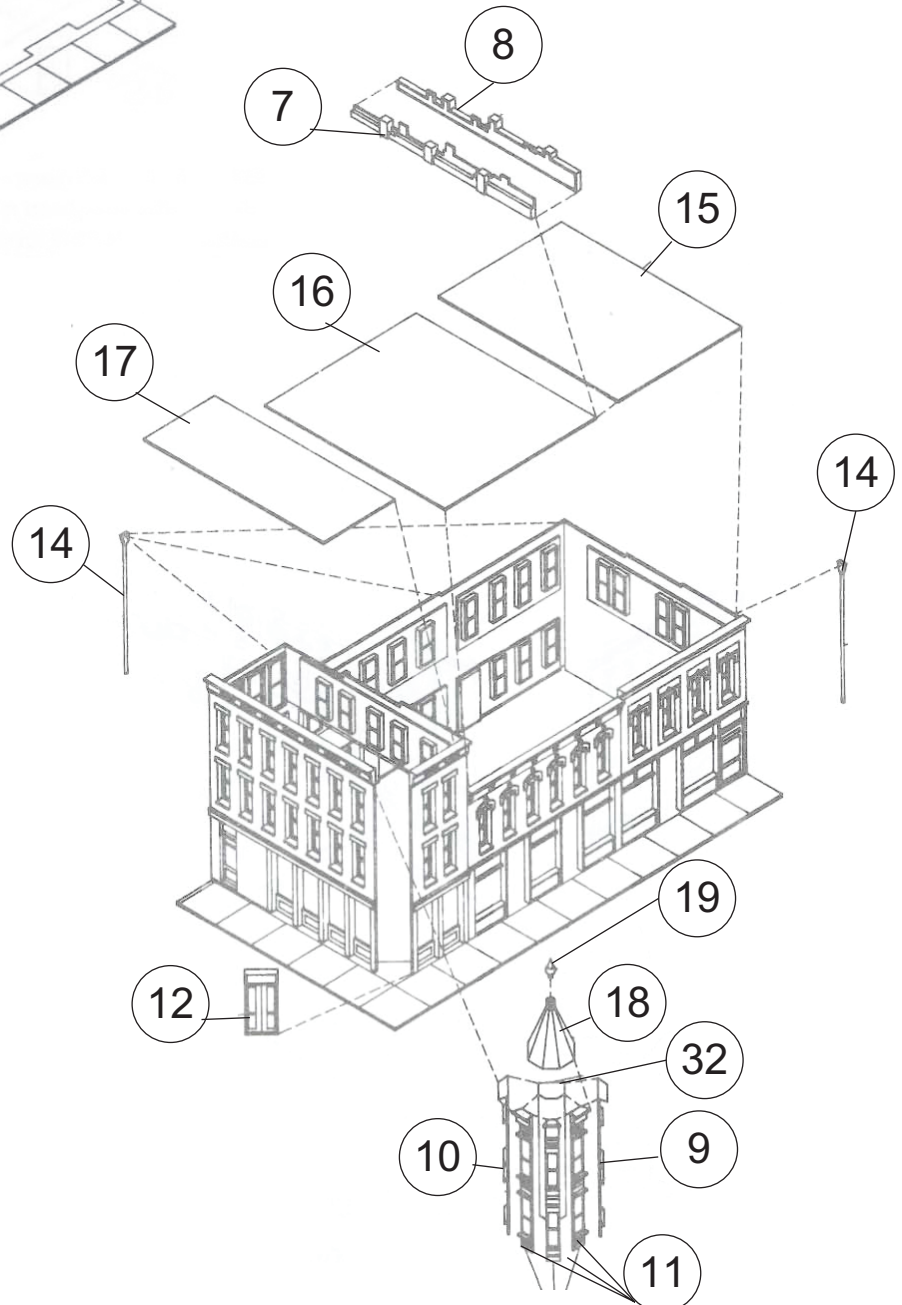
Glue the main walls (2-5) to the base (1).
Glue the top wall (6) in place as shown.

Glue the turret sides (9, 10, 11) around
the glass shape (32).

Glue ornament (19) to turret roof (18)
then glue roof in position.

Glue Roofs(15, 16, 17) in place. Glue
Roof dividers (7, 8) on as shown.

Finish assembly by gluing on downspouts
(14).



Note: Please read special instruction on decal for
special placements

DECALING

1. After cutting out the decal, dip in water for 10
seconds, remove and let stand for 1 minute. Slide
decal onto surface, position and then blot off any
excess water.
2. Lightly brush Micro Sol® on top. This will soften
the decal allowing it to conform to irregular
surfaces. DO NOT TOUCH DECAL while wet!
3. When the decal is thoroughly dry, check for any
trapped air bubbles. Prick them with the point of a
small pin or hobby knife blade and apply more
Micro Sol®.